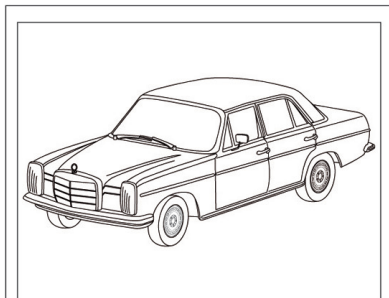


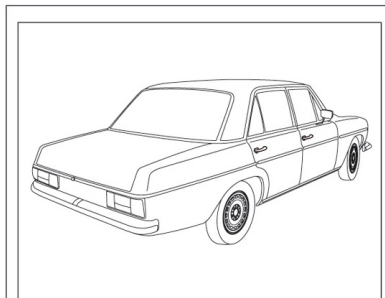
# Home-Check

## Instructions for creating the vehicle photos

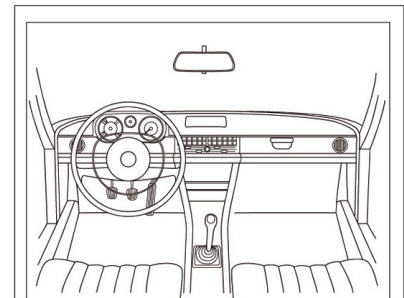
### Vehicle views



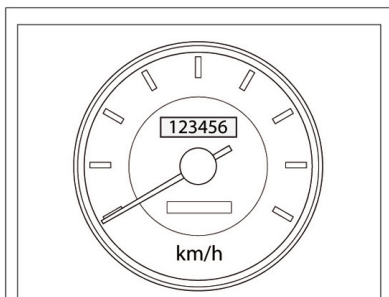
**Front view left**



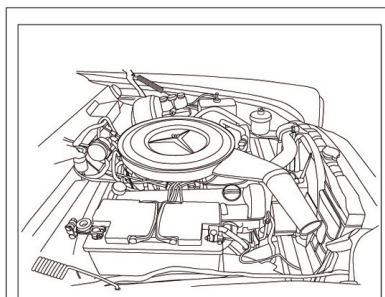
**Rear view right**



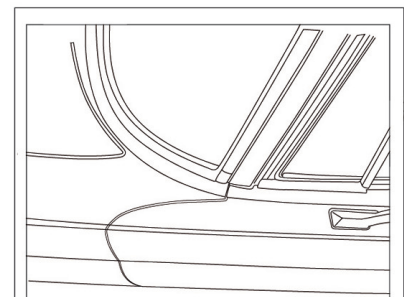
**Interior**



**Speedometer with km/mls status**



**Engine compartment**



**Close-up corner from left**  
(incl. windscreen, windscreen rubber, trim strip, paint, chrome, gap dimensions and possibly mirrors)

### Photographing tips

The following tips will help you achieve optimum results for your home check images

- You can upload photos up to a size of 8 MB. To edit or reduce the size of your photos you can use your graphics programme or freeware such as TOP (<http://www.traumflieger.de/onlinepicture.php>)
- Utilise the entire image format (as shown in our example views)
- Switch on the macro function for detailed photos
- Avoid direct flash
- Show that your photos are up-to-date: Place the latest issue of a classic car magazine (e.g. Motor Klassik) behind the windscreen